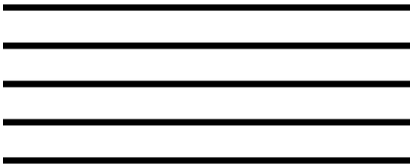


Written Music

Staff



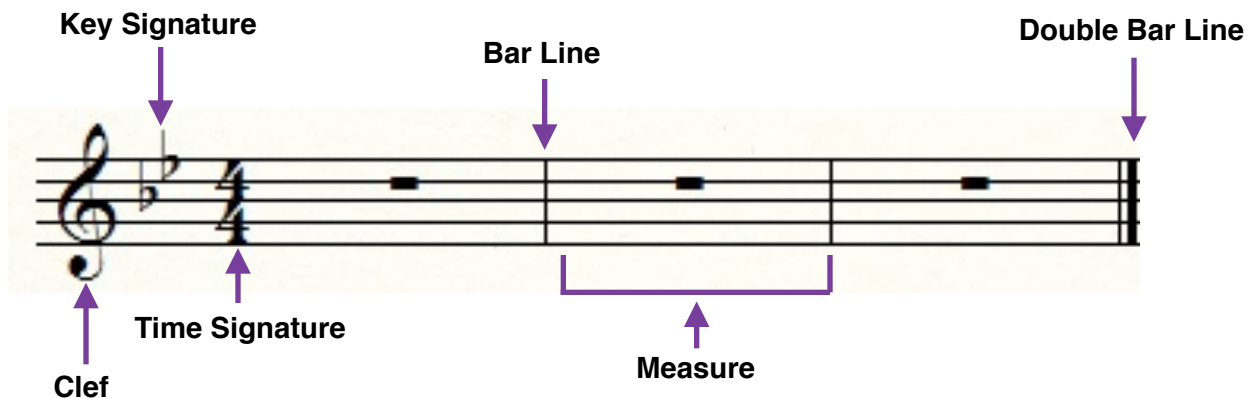
A **staff** is like lined paper for music. It has 5 lines and 4 spaces. It tells us how high or low we are going to play/sing.



Treble Clef is used for higher voices.



Bass Clef is used for lower voices.



Clef- tells us how high or low the range of our voice/instrument is going to sound.

Key Signature- tells us what notes can be played and what is flat or sharp.

Time Signature- tells us how many beats go in a measure and what type of note gets one beat.

Measures- make it easier for us to read musical patterns by creating smaller chunks within a staff.

Bar Line- divides a staff into measures.

Double Bar Line- tells us that we are at the end of a musical piece.